

成品示意图

360° VIEW PICTURE

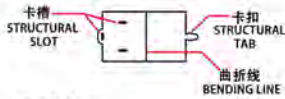
YM-NUT3-5
钢铁先锋
IRON PIONEER



! 请小心处理板件，以防划伤
Please be careful with handling parts to avoid any damage

组装基本步骤示意图

BASIC ASSEMBLING STEPS



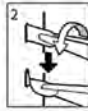
固定方式一：
将卡扣穿过对应固定孔，
按对应角度曲折（图一）

Fitting method 1:
put the tab in the slot,
bend properly(p1)



固定方式二：
将卡扣穿过对应固定孔，
用钳子类工具垂直扭曲固
定卡扣（图二）

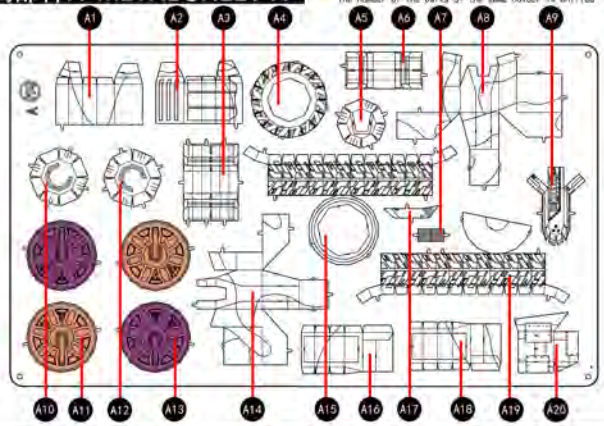
Fitting method 2:
put the tab in the slot,
bend the tab vertically
with plier(p2).



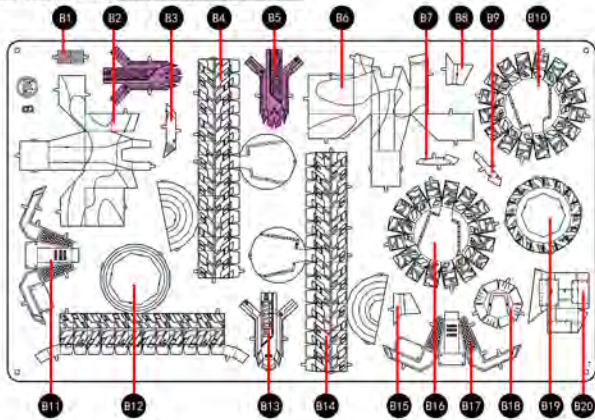
非纹理面
Non textured surface

金属部件A METAL SHEET-A

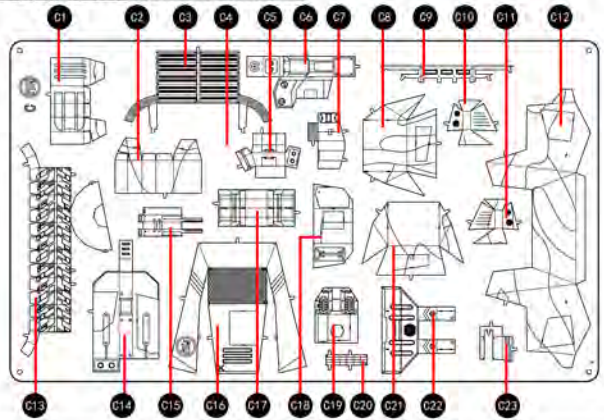
相同颜色的板件为统一编号
The number of the parts of the same colour is unified



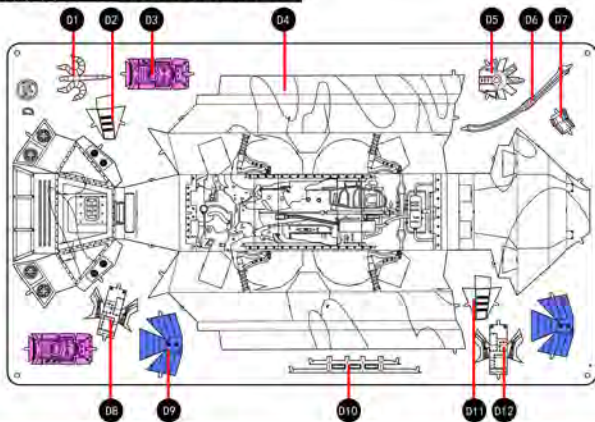
金属部件B METAL SHEET-B



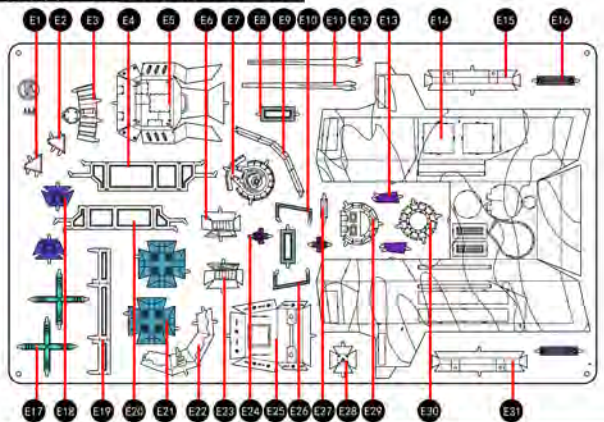
金属部件C METAL SHEET-C



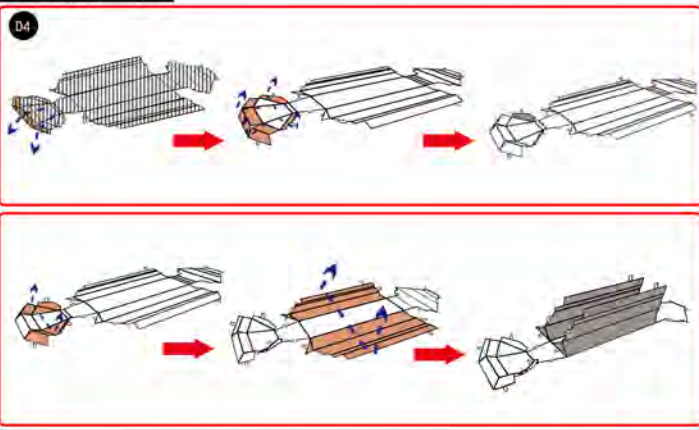
金属部件D METAL SHEET-D



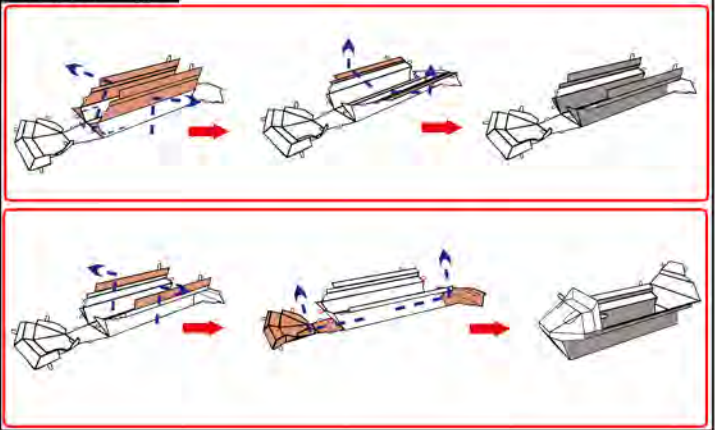
金属部件E METAL SHEET-E



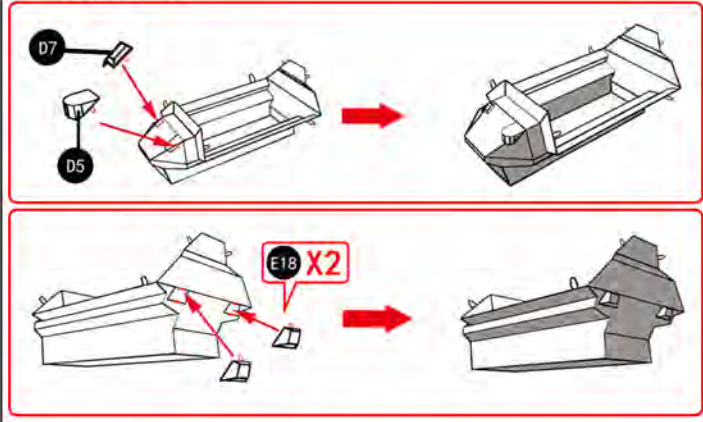
STEP 1



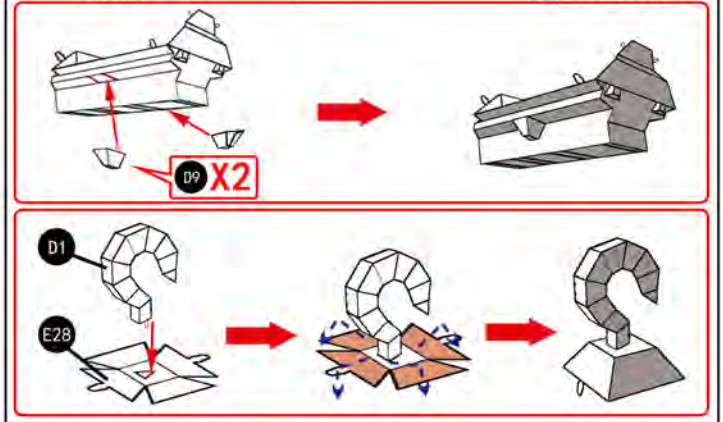
STEP 2



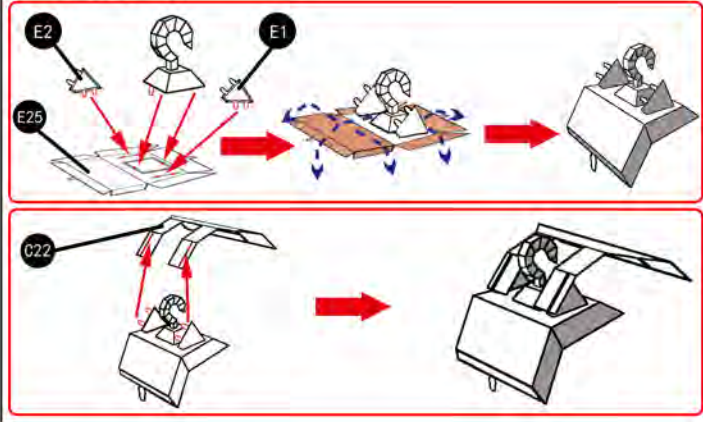
STEP 3



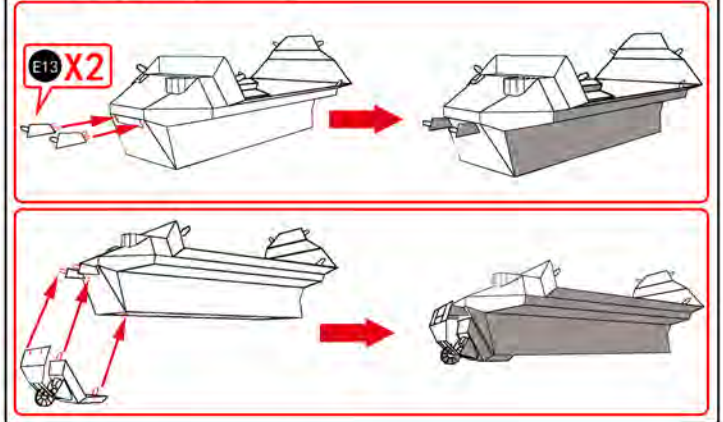
STEP 4



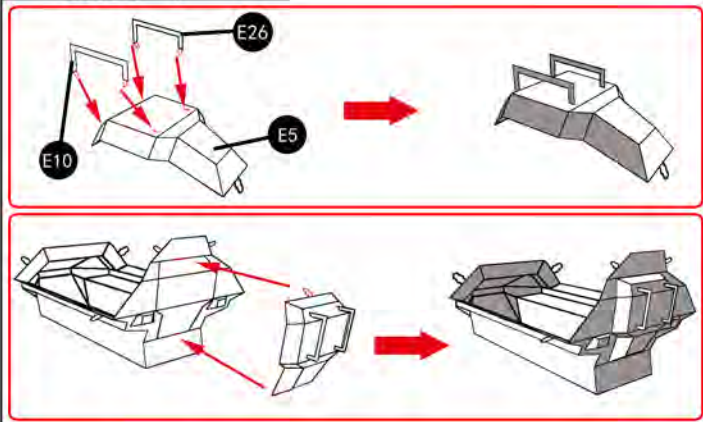
STEP 5



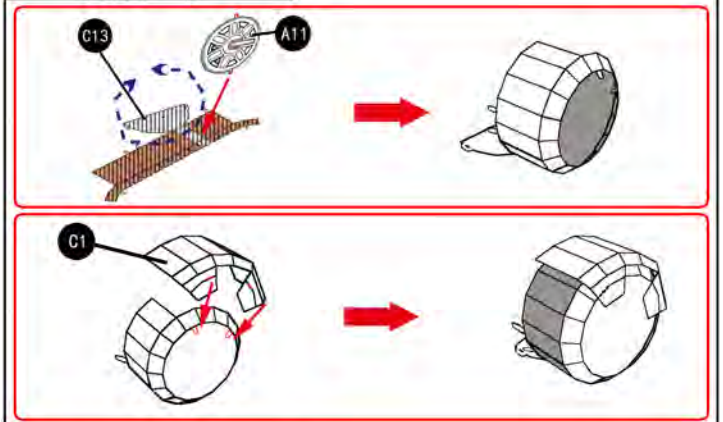
STEP 6



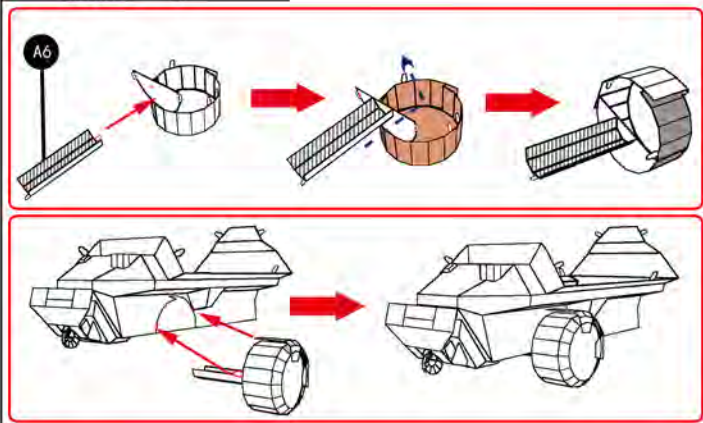
STEP 7



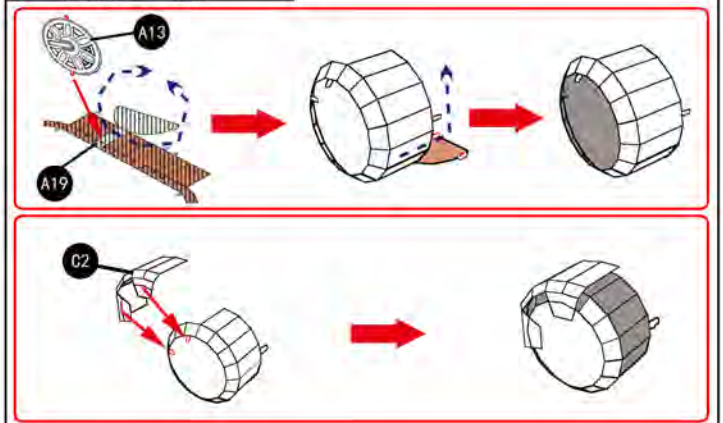
STEP 8



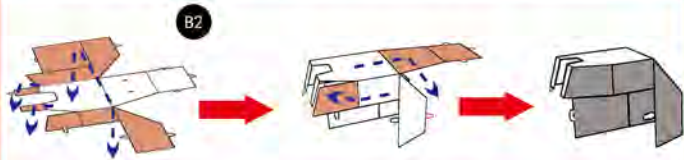
STEP 9



STEP 10

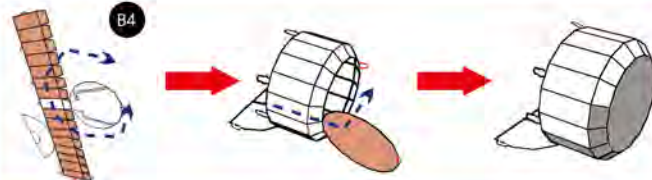
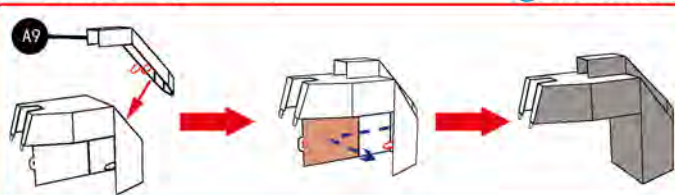


STEP 11

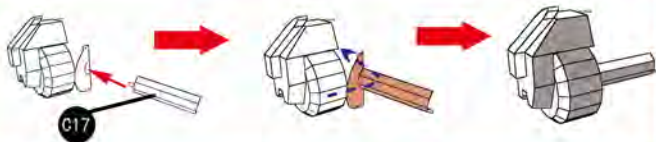
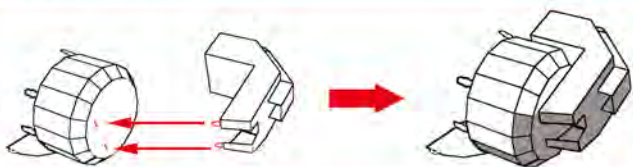


STEP 12

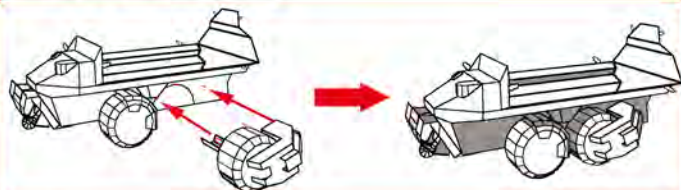
YM-N013-S



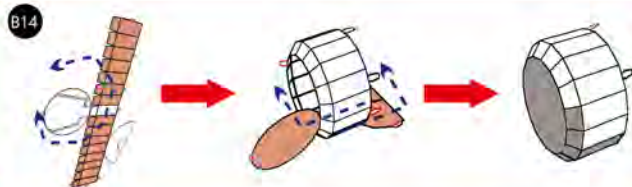
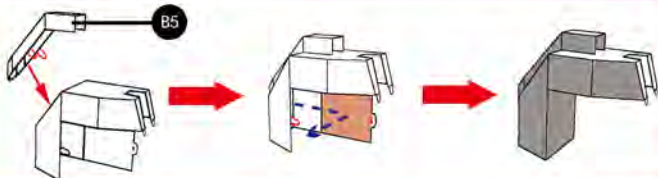
STEP 13



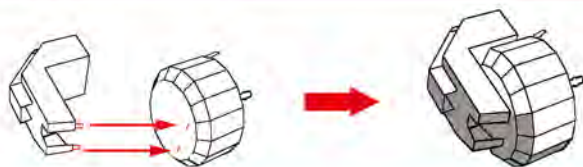
STEP 14



STEP 15



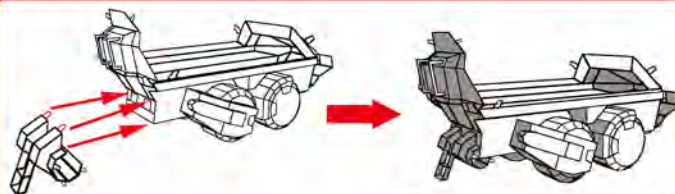
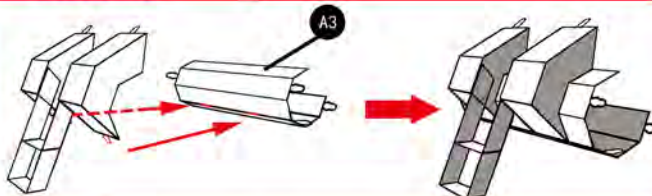
STEP 16



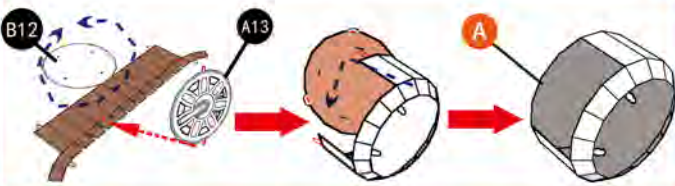
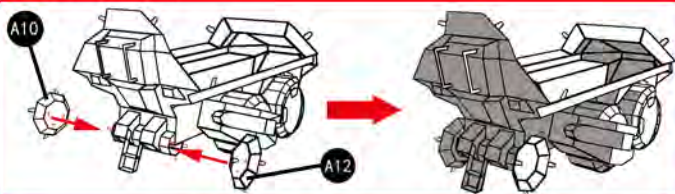
STEP 17



STEP 18

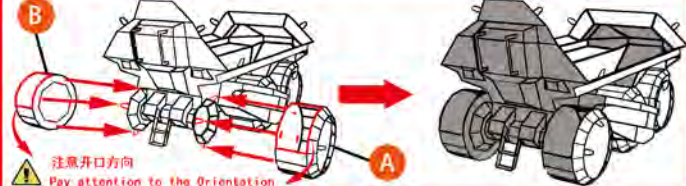
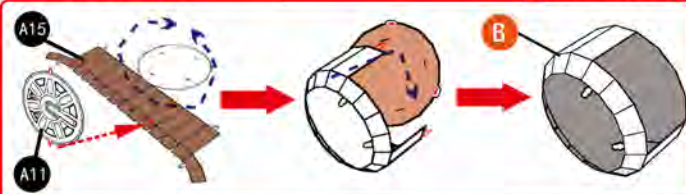


STEP 19

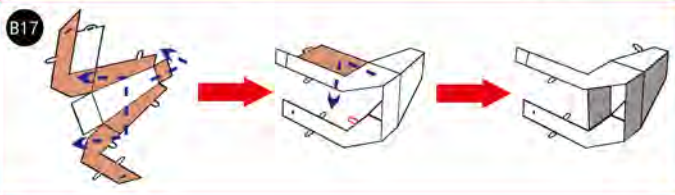
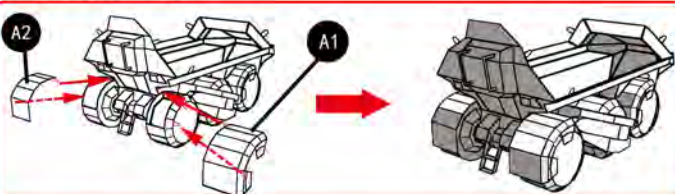


STEP 20

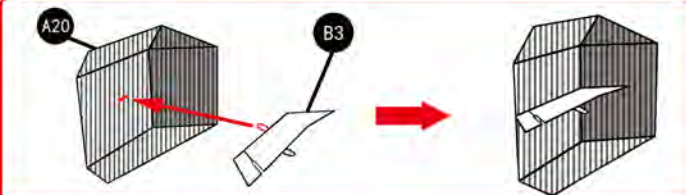
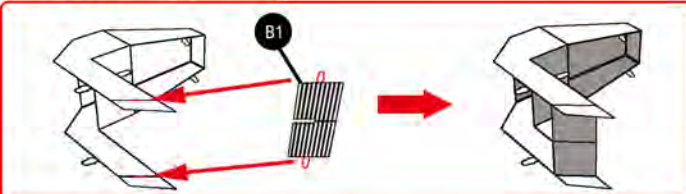
YM-N013-S



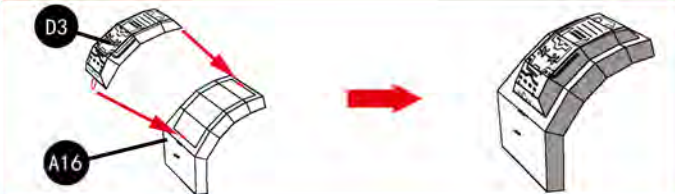
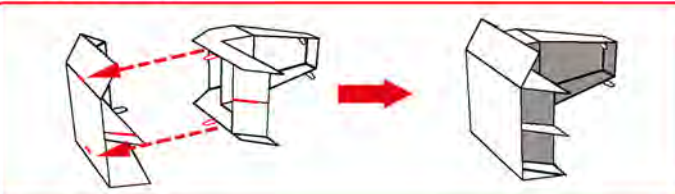
STEP 21



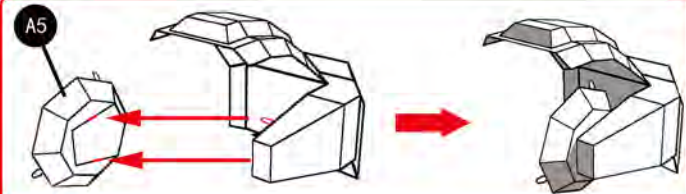
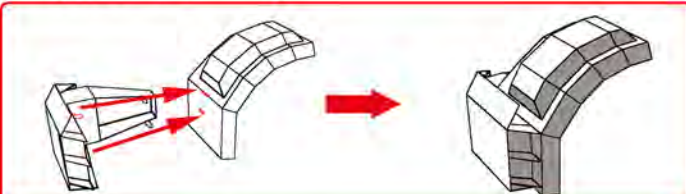
STEP 22



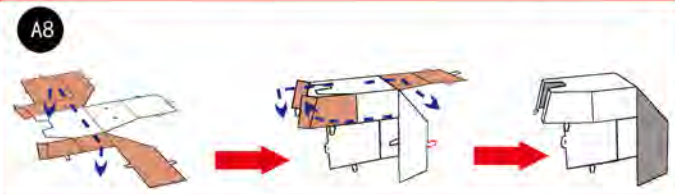
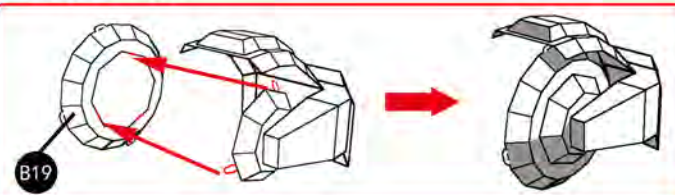
STEP 23



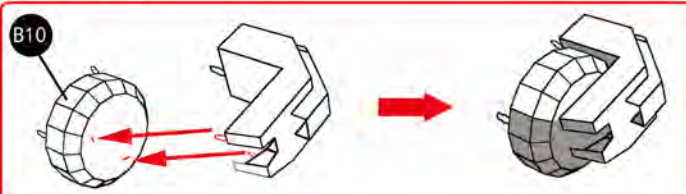
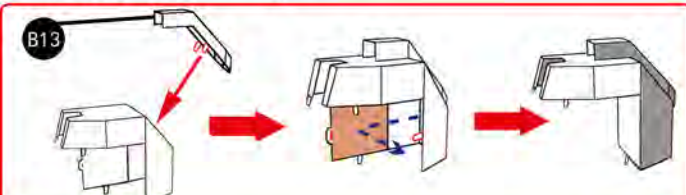
STEP 24



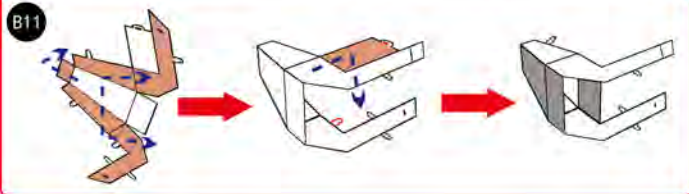
STEP 25



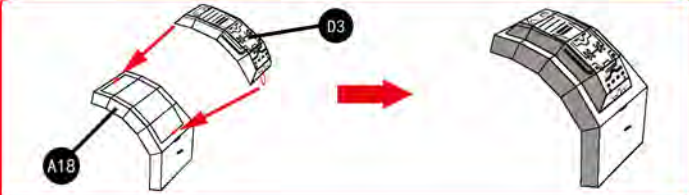
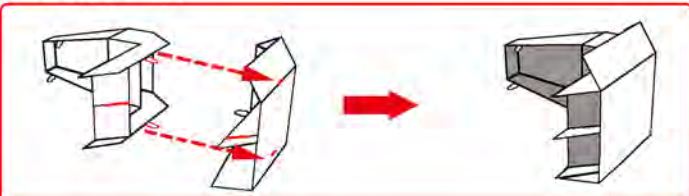
STEP 26



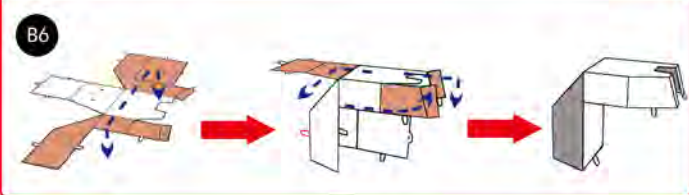
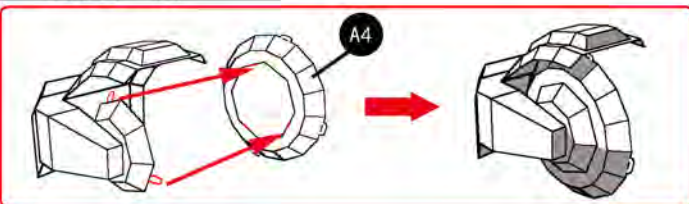
STEP 27



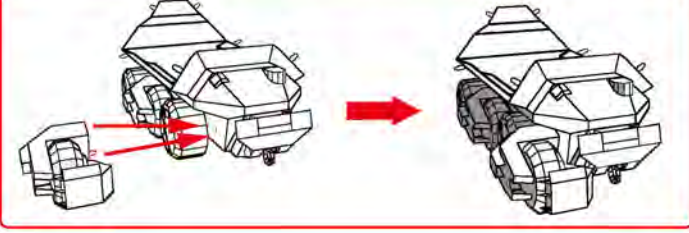
STEP 29



STEP 31

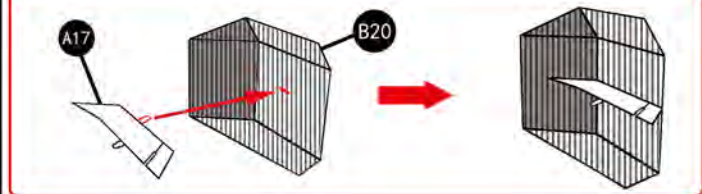
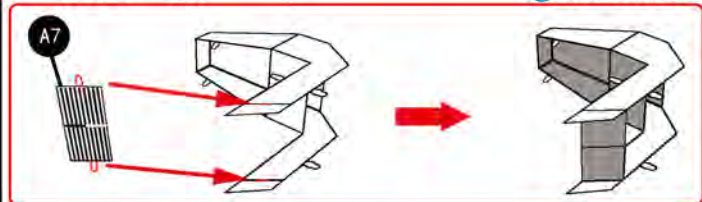


STEP 33

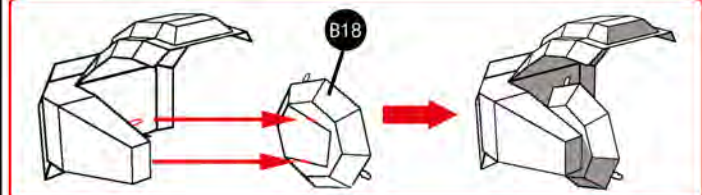
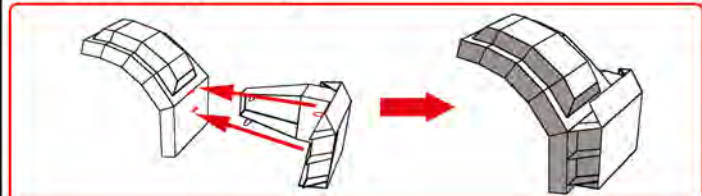


STEP 28

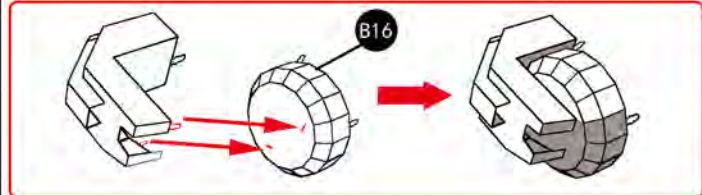
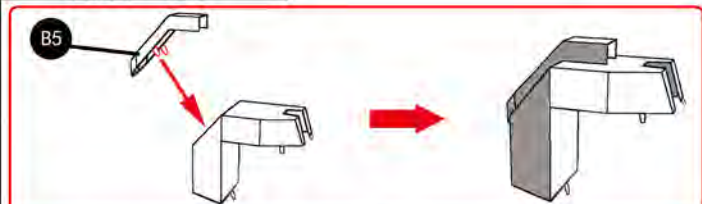
YM-N013-S



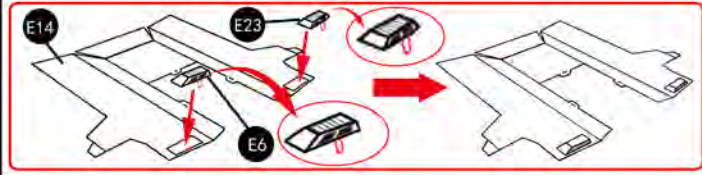
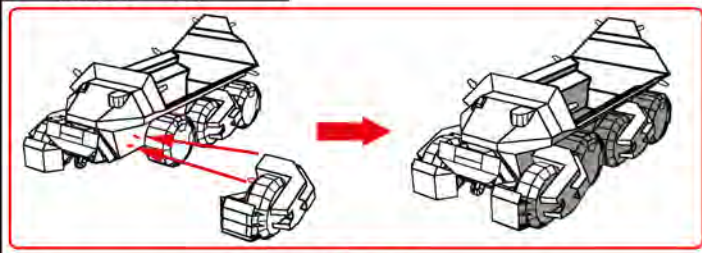
STEP 30



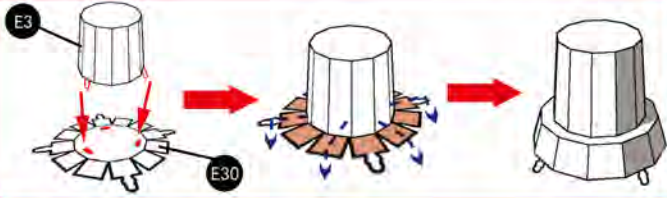
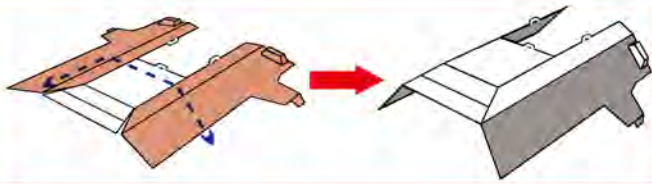
STEP 32



STEP 34

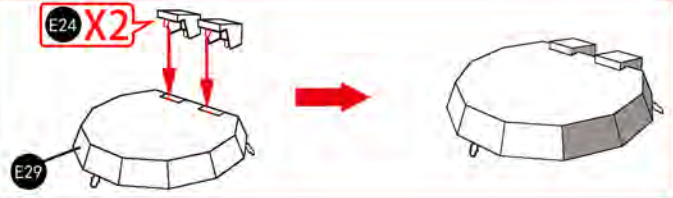
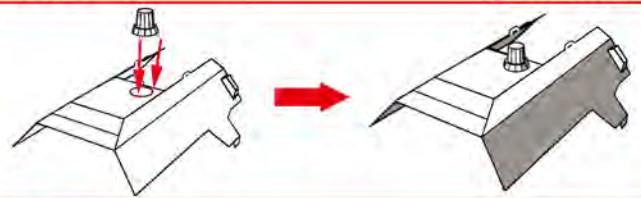


STEP 35

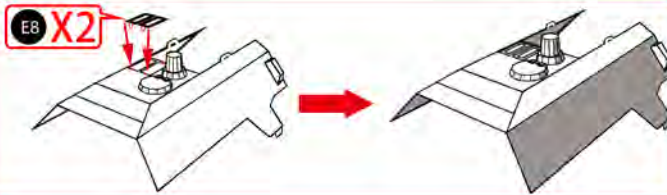
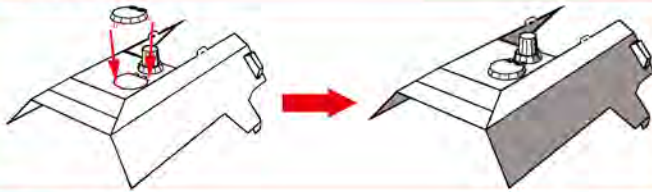


STEP 36

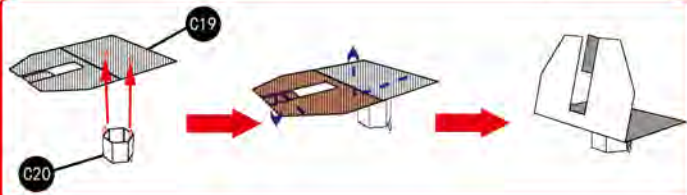
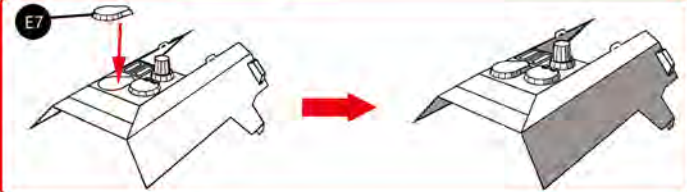
YM-N013-S



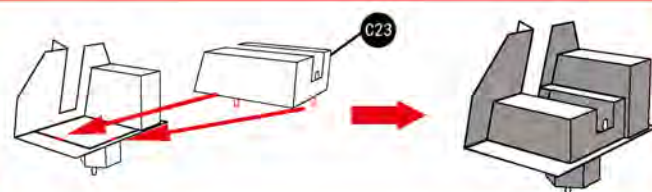
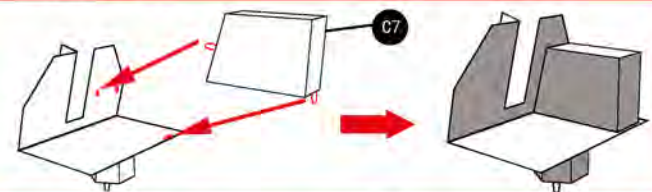
STEP 37



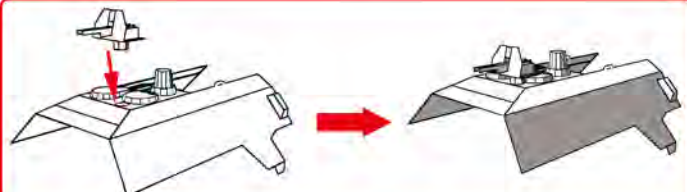
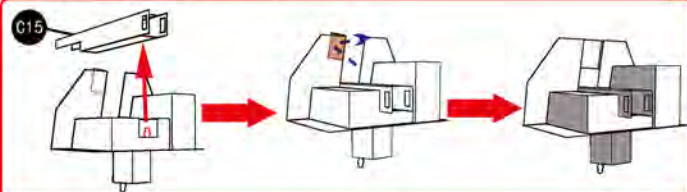
STEP 38



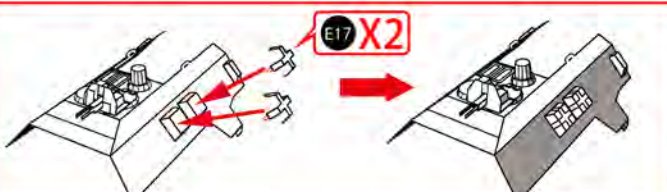
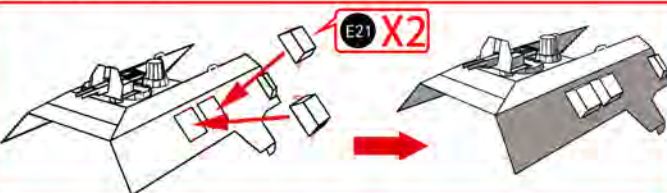
STEP 39



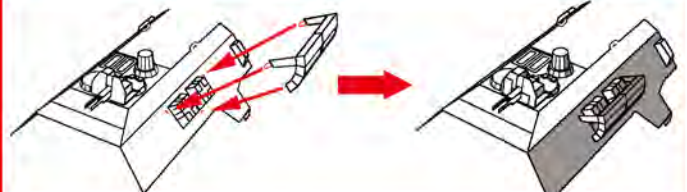
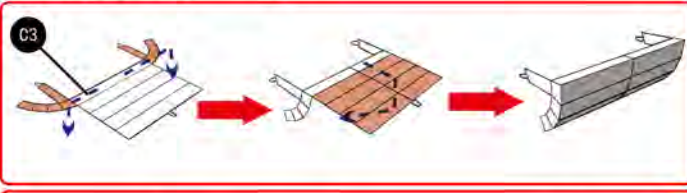
STEP 40



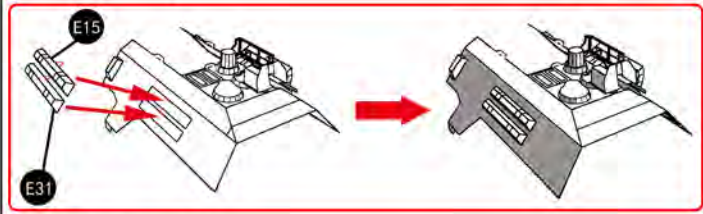
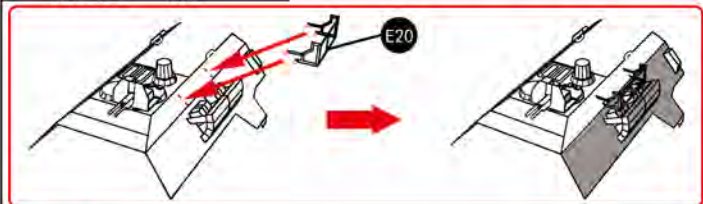
STEP 41



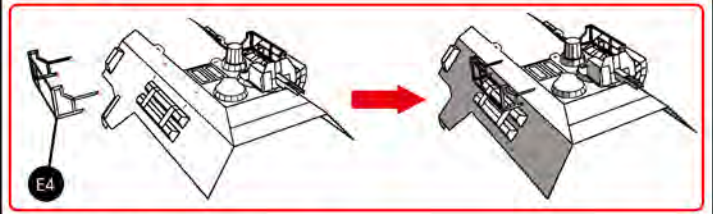
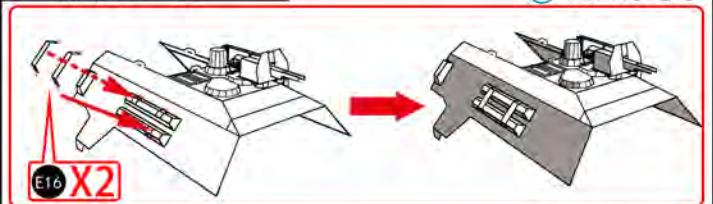
STEP 42



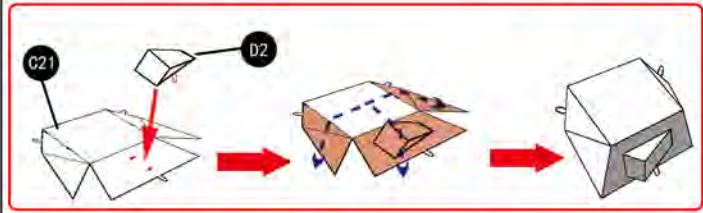
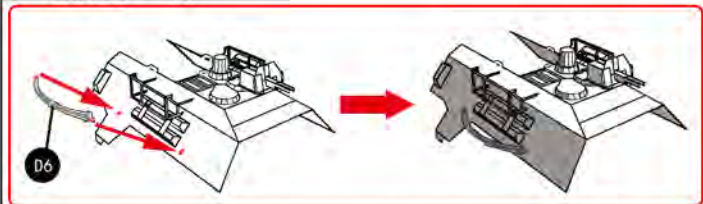
STEP 43



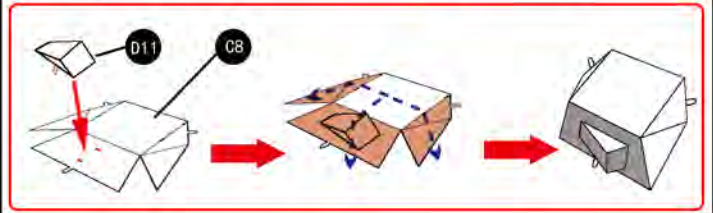
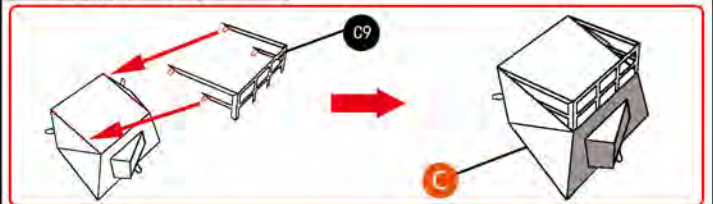
STEP 44



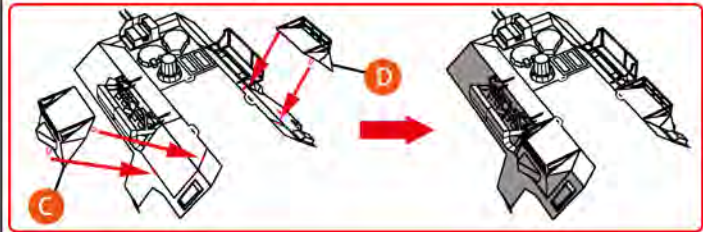
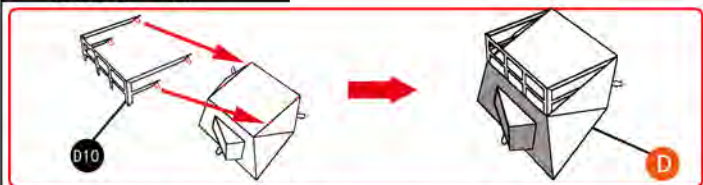
STEP 45



STEP 46



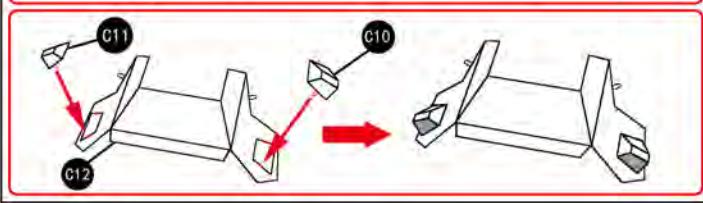
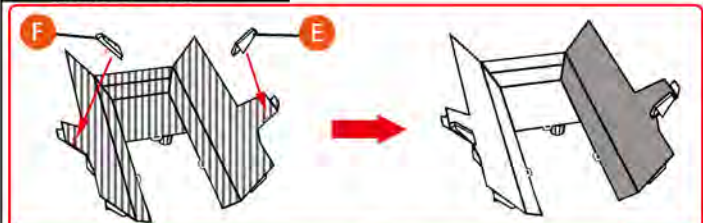
STEP 47



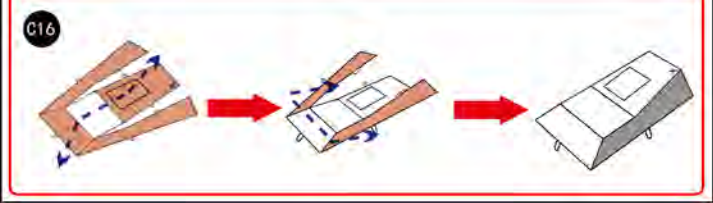
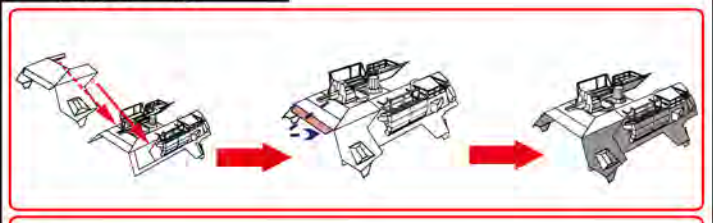
STEP 48



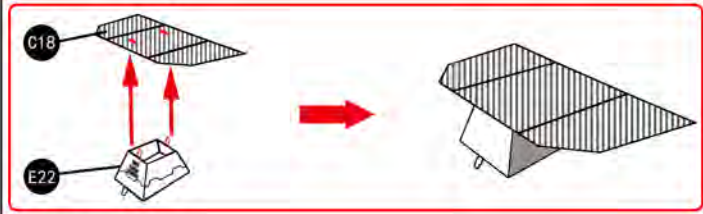
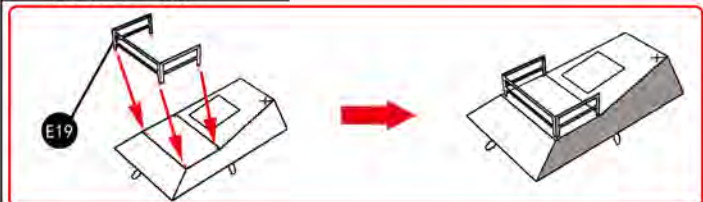
STEP 49



STEP 50

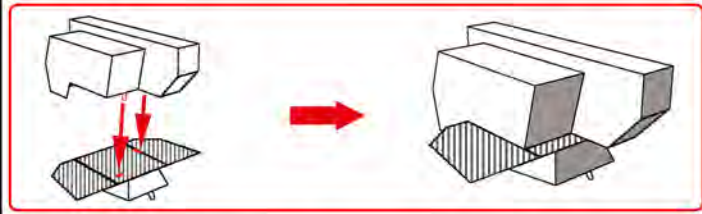
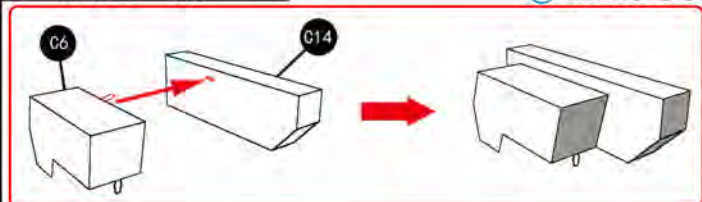


STEP 51

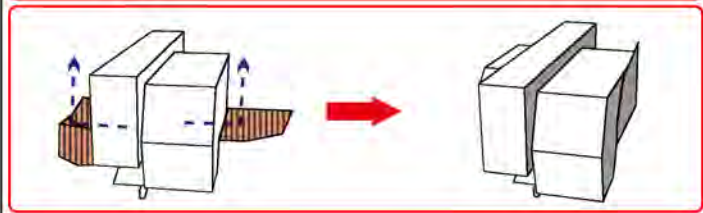
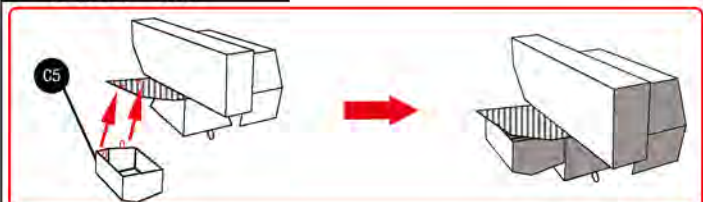


STEP 52

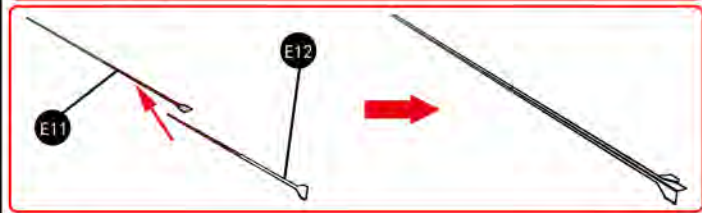
YM-N013-S



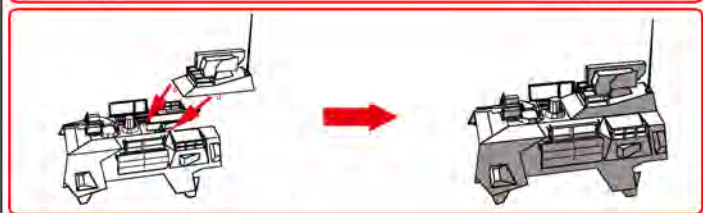
STEP 53



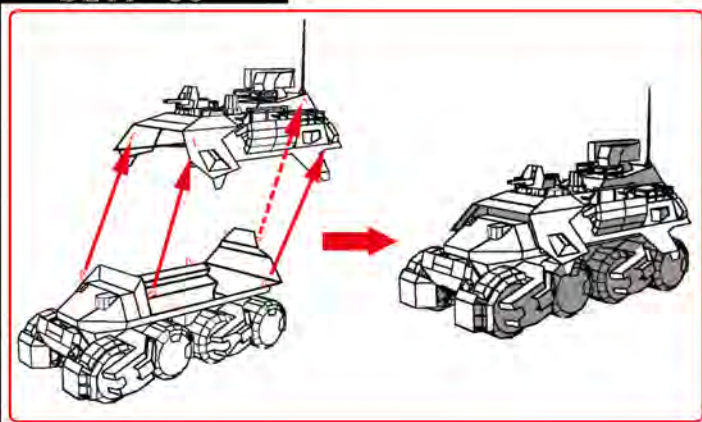
STEP 54



STEP 55



STEP 56



MU 艺模
MU art model

扫码加入微信公众号 解锁更多模型
Scan the two-dimensional code
to join us and unlock more models.

上海艺模电子科技有限公司
Shanghai Art Model Electronic
Science and Technology Co., Ltd.

Tel : 021-58942999
Website: www.maplemu.com

Design by: clarence
因幡Tewi
EterNaL

关注我们
focus on us

